



# Jungle Explorer's Activity Pack

(Ages 4-7)

Compiled by: Sue Lawrance ([sdlawrance@gmail.com](mailto:sdlawrance@gmail.com))  
Amanda Fairey ([amfairey@gmail.com](mailto:amfairey@gmail.com))



IUCN  
PRIMATES  
SECTION ON  
SMALL APES



International  
Gibbon Day

OXFORD  
BROOKES  
UNIVERSITY





# Did you know???

Rainforests get at least 250cm of rain a year. Sometimes it's almost double that at 450cm.

It can take ten minutes for a falling raindrop to travel from a rainforest's thick canopy to the floor.

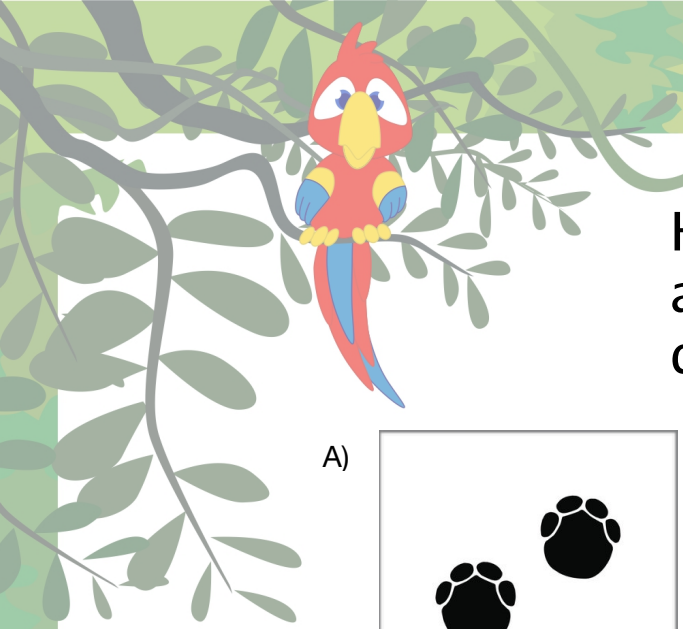


6% of the land on earth is covered in rainforest. Half of the plant and animal species in the world live there.

Jungles are mostly in warm places that have lots of rain, all the better for those plants to grow.

Chocolate, coffee, rice, tomatoes, and bananas all originated in jungles.



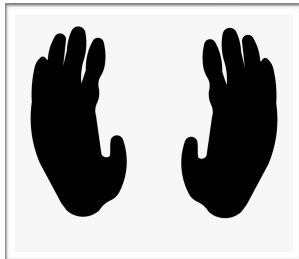


Have a go at matching the animal to their footprint by drawing a line between the two

A)



B)



C)



D)



E)



1)



2)



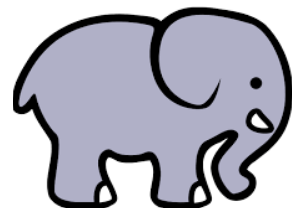
3)



4)



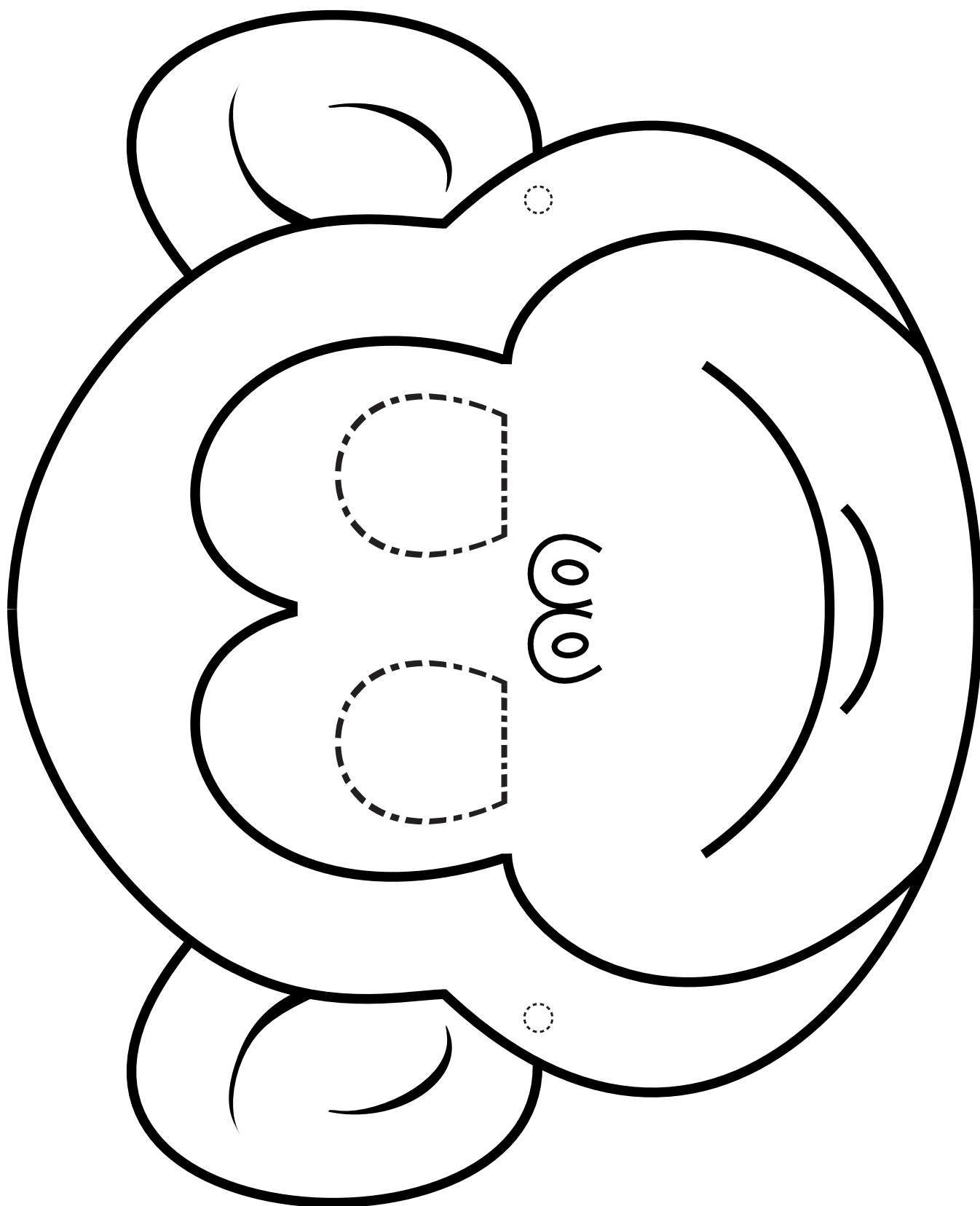
5)



Answers: A&5, B&2, C&4, D&3, E&1



Cut out the mask and the eye sections (get a grown up to help), colour in and put some string through the holes at the sides.



MONKEY MASK





# Spot The Difference

There are 9 differences between these pictures- can you find them all?



Once you have found the differences colour in the pictures!







# Make your own jungle at home 4+

For ages 4 and upwards

## What you will need

- ❖ Green leaves and small twigs from the garden or your local park
- ❖ Colouring pencils or crayons
- ❖ Container: cardboard box such as shoebox or cereal box with saucer or plastic tray in the bottom OR a glass jar OR a plastic tray such as mushroom or grape tray
- ❖ Soil (or mud/small stones)

## Green leaves and twigs

Can you find the following outside?

- ❖ Fern fronds
- ❖ Ivy leaves
- ❖ Holly leaves
- ❖ Fir tree leaves
- ❖ Moss
- ❖ A few brown leaves
- ❖ Small twigs and pine cones



## Step 1

***Make sure you have a plastic tray in the bottom of your cardboard box.***

**Fill your container with the soil making sure it is firmly pressed down.**

## Step 2

**Make your forest by sticking the twigs and leaves into the soil**

## Step 3

**Print off, cut out and colour your favourite jungle animals. When you have finished, put them in their new jungle home.**



**TOP TIP:** It rains every day in the jungle so make sure you water your plants and put them on a window sill.

## Making it grow

You could plant cress seeds or peas to bring life to your jungle. (Take out the moss as you won't have room for this as well.)

## Adding some flowers

You could add a small plant such as an African violet for bright flowers.

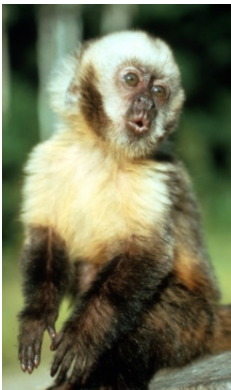
# How to play Top Trumps

- Share the 10 cards between one or two other players
- Decide who goes first
- Player 1 chooses a category in either the green or yellow box on their card and mentions a fact
- The other player(s) then mention the fact they have against that category
- The highest number wins the card
- The person to collect all of the cards is the winner.

## Example

- Using the cards below, Player 1 who owns Mini B chooses a category such as 'Cleverness' and reads out the number 5. So they say, 'Cleverness 5'.
- Player 2 who owns Eka checks their number for Cleverness and calls 3.
- Player 2 loses because Eka is not as clever as Mini B (3 is lower than 5)
- Player 2 gives their card to Player 1.
- Then it is the turn of Player 2 to choose a category from another card in their pile.

Source: IUCN Red List



### Mini B

Yellow-breasted  
Capuchin

**Capuchins** can live in large groups of up to 30 monkeys. They spend much of their time grooming each other.

They use tools, such as rocks to crack open hard nuts that they can't bite into.

#### Fun Facts

Cuteness: 4  
Friendliness: 5  
Cleverness: 5  
Noisiness: 3  
Distance from London, UK by air: 5761 miles

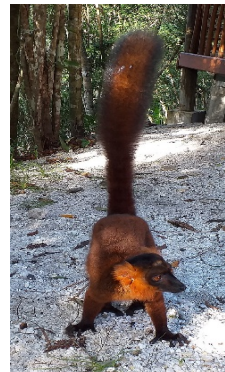
#### Essential Facts

Country: Brazil  
Weight: 2.5-4kg  
Threat status: 3 – Critically Endangered  
Favourite food: fruits, seeds, flowers, insects, reptiles, eggs and sometimes shellfish.

[www.brookes.ac.uk](http://www.brookes.ac.uk)



Source: IUCN Red List



### Eka

Red Ruffed  
Lemur

**Red Ruffed Lemurs** only live in a small area of northeast Madagascar. They are very clean animals and have six bottom teeth.

The teeth are called a toothcomb with which they groom and eat.

#### Fun Facts

Cuteness: 3  
Friendliness: 3  
Cleverness: 3  
Noisiness: 5  
Distance from London, UK by air: 5644

#### Essential Facts

Country: Madagascar  
Weight: 3.3-3.6kg  
Threat status: 3 - Critically Endangered  
Favourite food: Figs.

[www.brookes.ac.uk](http://www.brookes.ac.uk)







## Charlie Sumatran Elephant

Smaller than, their African cousins, **Sumatran Elephants** are almost completely bald.

They live in dense forest and will munch on 150kg of plants each day – that's the average weight of two male humans!

### Fun Facts

Cuteness: 4  
Cleverness: 5  
Noisiness: 2  
Agility: 2  
Distance from London, UK on foot: 8,040 miles

### Essential Facts

Country: Sumatra  
Weight: 2000-4000kg  
Threat status: 3 – Critically Endangered  
Favourite food: grass, leaves, shoots, barks, fruits, nuts, and seeds.

[www.brookes.ac.uk](http://www.brookes.ac.uk)



## Shakira Sambar Deer

Beautiful **Sambar Deer** are nocturnal and live alone or in very small groups which is unusual.

They are the favourite prey of tigers and Asiatic lions, also sometimes crocodiles.

### Fun Facts

Cuteness: 2  
Cleverness: 3  
Noisiness: 3  
Agility: 3  
Distance from London, UK on foot: 5,414 miles

### Essential Facts

Countries: India, China, Borneo, Malaysia  
Weight: 180-350kg  
Threat status: 5 – Vulnerable  
Favourite food: grass, fruits, leaves, herbs, buds, berries, bamboo, bark.

[www.brookes.ac.uk](http://www.brookes.ac.uk)



## Will Brown wood-owl

This species, which lives across south Asia, is very shy and 100% nocturnal hunting small mammals at night. It can be

located from the noise of small birds 'mobbing' it during the day when it sleeps in tall trees.

### Fun Facts

Cuteness: 3  
Cleverness: 4  
Noisiness: 3  
Agility: 3  
Distance from London, UK on foot: 6,476 miles

### Essential Facts

Country: Borneo, south Asia  
Weight (M): 0.8-1.1kg  
Threat status: 7 – Least Concern  
Favourite food: small mammals, birds and reptiles.

[www.brookes.ac.uk](http://www.brookes.ac.uk)



## Jeff Black-legged Dart Frog

This tiny frog lives in leaf litter, giving high-pitched, bird-like calls. It is one of the world's most toxic animals and

has enough toxins on its skin to kill 10 adults.

### Fun Facts

Cuteness: 2  
Cleverness: 3  
Noisiness: 4  
Agility: 3  
Distance from London, UK on foot: 5,388 miles

### Essential Facts

Country: Colombia  
Weight: 0.2kg  
Threat status: 4 – Endangered  
Favourite food: Insects.

[www.brookes.ac.uk](http://www.brookes.ac.uk)





## Arief

### Grey Gibbon

Arief and his family live in the rainforest. **Grey Gibbons** love to eat fruit and swing through the trees

using their long arms. They defend their territory with loud calls.

#### Fun Facts

Cuteness: 3  
Cleverness: 4  
Noisiness: 5  
Agility: 5  
Distance from London, UK on foot: 9500 miles

#### Essential Facts

Country: Borneo  
Weight (M): 4-8kg  
Threat status: 4 - Endangered  
Favourite food: Fruit.

[www.brookes.ac.uk](http://www.brookes.ac.uk)



## Indah

### Bornean Orangutan

This is the second largest ape in the world.

**Orangutans** build a nest of branches and leaves high in the trees every day. They prefer to live on their own except when they have an infant to look after.

#### Fun Facts

Cuteness: 4  
Cleverness: 5  
Noisiness: 2  
Agility: 5  
Distance from London, UK on foot: 10,188 miles

#### Essential Facts

Country: Borneo  
Weight (M): 50-100kg  
Threat status: 3 - Critically Endangered  
Favourite food: Figs, durian, honey, seeds, eggs, leaves, flowers.

[www.brookes.ac.uk](http://www.brookes.ac.uk)



## Lara

### Clouded Leopard

Living in dense forests from the Himalayas to Borneo, **Clouded Leopards** are solitary and secretive. They use

their tails for balance and can climb down vertical tree trunks head first!

#### Fun Facts

Cuteness: 2  
Cleverness: 4  
Noisiness: 1  
Agility: 5  
Distance from London, UK on foot: 10,000 miles

#### Essential Facts

Countries: Nepal, India, Borneo  
Weight (M): 11-23kg  
Threat status: 4 - Endangered  
Favourite food: Small deer, monkeys, porcupine, pangolin.

[www.brookes.ac.uk](http://www.brookes.ac.uk)



## Bob

### Javan Slow Loris

They look cute but don't be fooled! Slow Lorises have a venomous bite when threatened!

They also have 2 tongues. Their 'normal' tongue is among the longest of all primates. The hard under tongue cleans the teeth and collects pollen.

#### Fun Facts

Cuteness: 5  
Cleverness: 3  
Noisiness: 1  
Agility: 4  
Distance from London, UK on foot: 9010 miles

#### Essential Facts

Country: Java  
Weight (M): 0.5-0.6kg  
Threat status: 3 - Critically Endangered  
Favourite food: fruit, lizards, eggs, and chocolate seeds.

[www.brookes.ac.uk](http://www.brookes.ac.uk)