



Jungle Explorer's Activity Pack

(Ages 8+)

Compiled by: Sue Lawrance (sdlawrance@gmail.com)
Amanda Fairey (amfairey@gmail.com)



IUCN
PRIMATES
SECTION ON
SMALL APES



International
Gibbon Day

OXFORD
BROOKES
UNIVERSITY





Did you know???

Rainforests get at least 250cm of rain a year. Sometimes it's almost double that at 450cm.

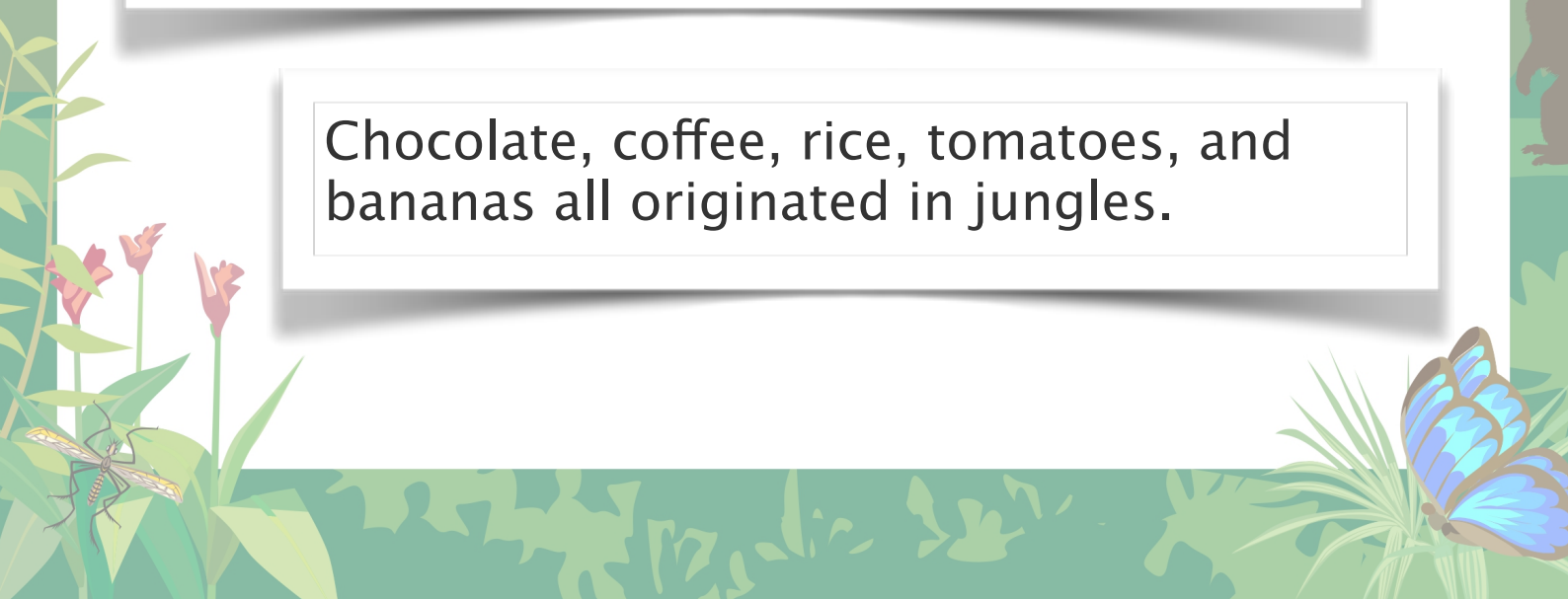
It can take ten minutes for a falling raindrop to travel from a rainforest's thick canopy to the floor.



6% of the land on earth is covered in rainforest. Half of the plant and animal species in the world live there.

Jungles are mostly in warm places that have lots of rain, all the better for those plants to grow.

Chocolate, coffee, rice, tomatoes, and bananas all originated in jungles.





Can you spot 15 differences?





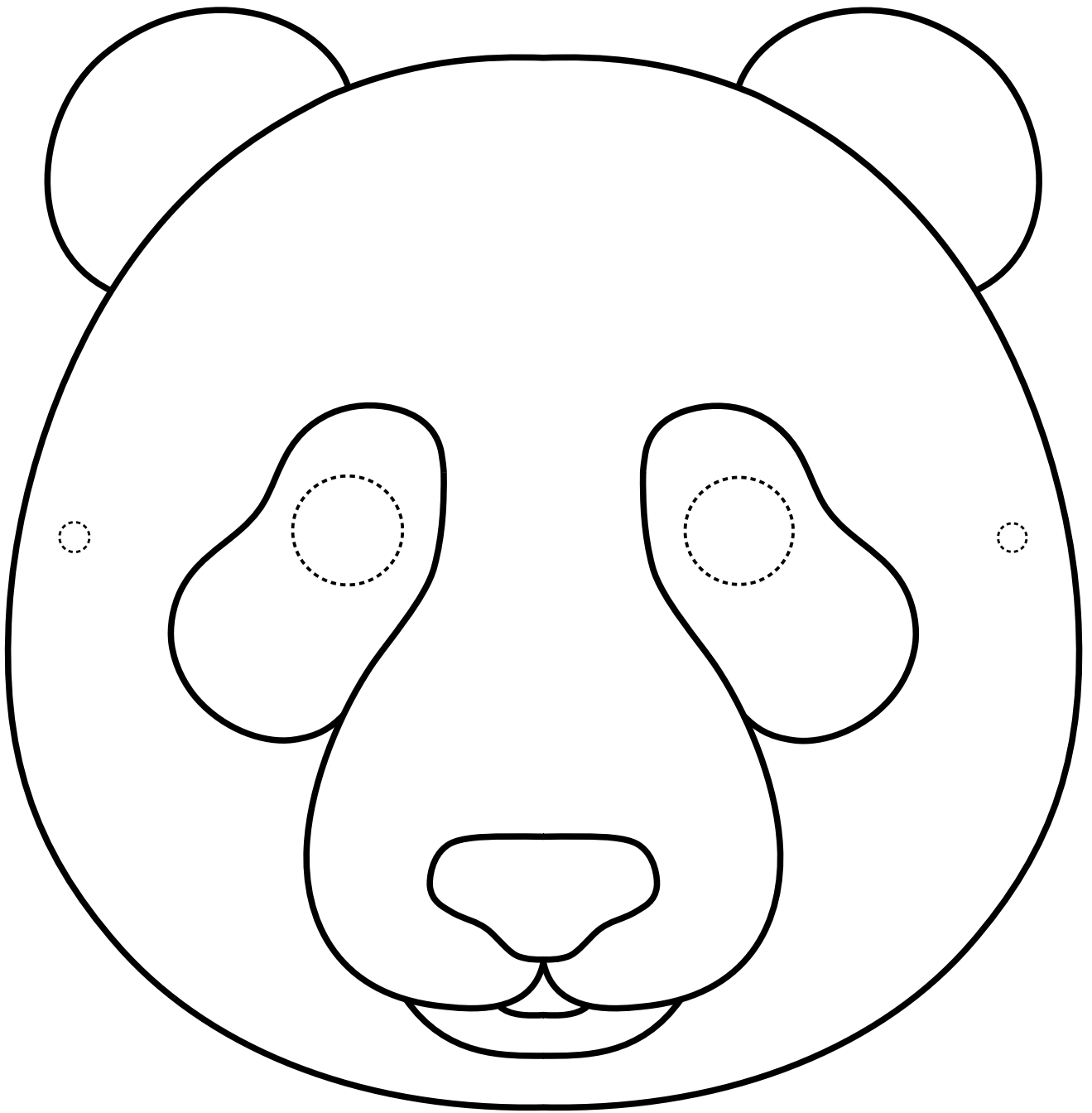
Word Jungle

D	I	N	T	T	D	N	I	L	O	G	N	A	P
E	E	N	L	N	R	A	B	O	A	P	A	L	O
F	E	E	D	A	A	A	E	N	S	G	E	E	R
R	L	S	F	H	P	T	A	G	O	N	S	J	A
O	O	U	G	P	O	E	R	P	K	E	I	O	N
G	Y	S	R	E	E	E	D	G	P	T	R	B	G
E	K	U	O	L	L	T	E	N	I	N	O	A	U
L	R	N	K	E	D	W	D	O	R	L	L	D	T
G	Y	B	R	M	E	S	P	E	A	J	W	N	A
N	K	E	O	O	D	E	I	E	D	M	O	L	N
U	E	A	E	N	U	E	G	E	E	B	L	D	R
J	A	R	O	K	O	R	G	I	B	R	S	P	G
G	M	R	O	E	L	T	D	I	A	S	L	O	B
P	G	G	R	Y	C	G	G	T	L	I	R	N	P

PANGOLIN
GIBBON
BEARDED PIG
CLOUDED LEOPARD
ELEPHANT
SLOW LORIS
TREES
JUNGLE
ORANGUTAN
MONKEY
FROG
SUN BEAR



Panda Bear Mask



Cut out the face and eye holes, colour in and thread some string through the sides to create a panda mask



What is bigger, longer, faster???

1. What is longer?

Borneo's Reticulated Python or 5 x Lionel Messi

2. Who is taller?

A Western gorilla or Captain America?

3. What's faster?

A leopard or Usain Bolt?

4. What is taller?

Borneo's yellow meranti tree or 23 x double decker buses?

5. What is heavier?

A PS5 or a South Australian Koala?

6. What is heavier?

A grey gibbon or a Jack Russell dog?

Jungle Scramble:

Unscramble the letters to discover 5 animals you would find in the jungle

1. coloured paddle
2. aunt organ
3. natural ta
4. frying golf
5. hen plates



Answers: 1. The 10m python is longer than Messi (1.7m), 2. Captain America (Chris Evans) is taller (1.8m) than a Western Gorilla (1.6m), 3. A leopard is faster, running 40miles per hour to Usain Bolt's 27miles per hour, 4. 23 Double Decker buses are only just taller than the Meranti tree which is 330ft tall, 5. An adult male koala (11.8kg) is heavier than a PS5 (4.5kg), 6. A Jack Russell (6.4kg) is heavier than a grey gibbon (5.8kg)

1. Clouded Leopard, 2. Orangutan, 3. Tarantula, 4. Flying Frog, 5. Elephants

Grow your own jungle at home 8+

For ages 8 and upwards

What you will need

- ❖ Green leaves and small twigs
- ❖ Container: cardboard box such as shoebox with saucer or plastic tray in the bottom OR a glass jar OR a plastic tray such as mushroom or grape tray OR a flower pot
- ❖ Soil: potting compost or garden soil
- ❖ 1 x packet of wildflower seeds OR other flower seeds such as lobelia or petunia
- ❖ Optional small plant such as aloe vera OR a cactus OR ivy with a short stem/roots

Step 1 – Add the soil

Fill your container with the soil. Push it down firmly and add some more if you need to so that the level is 2 cm from the top.

Make sure you have a plastic tray in the bottom of your cardboard box first.

Step 2 – Sow your seeds

Sprinkle your flower seeds thinly on the soil. Cover with a 1cm layer of soil.

Step 3 – Add your other plant

Make a hole in the soil for your small plant. Add your plant and move the soil back around it with your hands making sure that it is firmly planted.

Step 4 – Create your forest

Stick a few of the twigs and leaves into the soil. You can lay the ivy near the edge so that it trails over the sides. If you push it gently into the soil on one end then it may continue to grow.

Remember to leave some bare patches of soil for your flower seeds to grow.

Step 5 – Water and grow

Lightly water your rainforest. Now put it on a window sill and watch it grow. From April onwards, put your container outside. Look out for bees, butterflies, ladybirds, beetles and other small creatures that might call your rainforest 'home'..

Green leaves and twigs

Can you find the following outside?

- ❖ Fern fronds
- ❖ A few pieces of trailing ivy
- ❖ Holly leaves
- ❖ Fir tree leaves
- ❖ Moss
- ❖ Small twigs

How to make a mini watering can

- ❖ Find an old plastic milk container or similar
- ❖ Rinse it out
- ❖ Ask an adult to make some small holes in the lid
- ❖ Fill your carton with water and screw the lid on tightly
- ❖ You now have your own watering can!



Where to find seeds and plants

- ❖ your local garden centre, supermarket or online.
- ❖ In the park such as grass seeds, red berries or seeds in dried flower heads.

Experiment and see what grows!



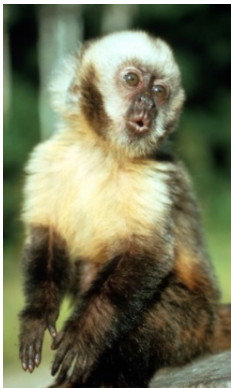
How to play Top Trumps

- Share the 10 cards between one or two other players
- Decide who goes first
- Player 1 chooses a category in either the green or yellow box on their card and mentions a fact
- The other player(s) then mention the fact they have against that category
- The highest number wins the card
- The person to collect all of the cards is the winner.

Example

- Using the cards below, Player 1 who owns Mini B chooses a category such as 'Cleverness' and reads out the number 5. So they say, 'Cleverness 5'.
- Player 2 who owns Eka checks their number for Cleverness and calls 3.
- Player 2 loses because Eka is not as clever as Mini B (3 is lower than 5)
- Player 2 gives their card to Player 1.
- Then it is the turn of Player 2 to choose a category from another card in their pile.

Source: IUCN Red List



Mini B

Yellow-breasted
Capuchin

Capuchins can live in large groups of up to 30 monkeys. They spend much of their time grooming each other.

They use tools, such as rocks to crack open hard nuts that they can't bite into.

Fun Facts

Cuteness: 4
Friendliness: 5
Cleverness: 5
Noisiness: 3
Distance from London, UK by air: 5761 miles

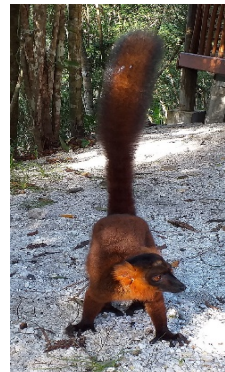
Essential Facts

Country: Brazil
Weight: 2.5-4kg
Threat status: 3 – Critically Endangered
Favourite food: fruits, seeds, flowers, insects, reptiles, eggs and sometimes shellfish.

www.brookes.ac.uk



Source: IUCN Red List



Eka

Red Ruffed
Lemur

Red Ruffed Lemurs only live in a small area of northeast Madagascar. They are very clean animals and have six bottom teeth.

The teeth are called a toothcomb with which they groom and eat.

Fun Facts

Cuteness: 3
Friendliness: 3
Cleverness: 3
Noisiness: 5
Distance from London, UK by air: 5644

Essential Facts

Country: Madagascar
Weight: 3.3-3.6kg
Threat status: 3 - Critically Endangered
Favourite food: Figs.

www.brookes.ac.uk





Arief

Grey Gibbon

Arief and his family live in the rainforest. **Grey Gibbons** love to eat fruit and swing through the trees

using their long arms. They defend their territory with loud calls.

Fun Facts

Cuteness: 3
Cleverness: 4
Noisiness: 5
Agility: 5
Distance from London, UK on foot: 9500 miles

Essential Facts

Country: Borneo
Weight (M): 4-8kg
Threat status: 4 - Endangered
Favourite food: Fruit.

www.brookes.ac.uk



Indah

Bornean Orangutan

This is the second largest ape in the world.

Orangutans build a nest of branches and leaves high

in the trees every day. They prefer to live on their own except when they have an infant to look after.

Fun Facts

Cuteness: 4
Cleverness: 5
Noisiness: 2
Agility: 5
Distance from London, UK on foot: 10,188 miles

Essential Facts

Country: Borneo
Weight (M): 50-100kg
Threat status: 3 - Critically Endangered
Favourite food: Figs, durian, honey, seeds, eggs, leaves, flowers.

www.brookes.ac.uk



Lara

Clouded Leopard

Living in dense forests from the Himalayas to Borneo, **Clouded Leopards** are solitary and secretive. They use

their tails for balance and can climb down vertical tree trunks head first!

Fun Facts

Cuteness: 2
Cleverness: 4
Noisiness: 1
Agility: 5
Distance from London, UK on foot: 10,000 miles

Essential Facts

Countries: Nepal, India, Borneo
Weight (M): 11-23kg
Threat status: 4 - Endangered
Favourite food: Small deer, monkeys, porcupine, pangolin.

www.brookes.ac.uk



Bob

Javan Slow Loris

They look cute but don't be fooled! Slow Lorises have a venomous bite when threatened!

They also have 2 tongues. Their 'normal' tongue is among the longest of all primates. The hard under tongue cleans the teeth and collects pollen.

Fun Facts

Cuteness: 5
Cleverness: 3
Noisiness: 1
Agility: 4
Distance from London, UK on foot: 9010 miles

Essential Facts

Country: Java
Weight (M): 0.5-0.6kg
Threat status: 3 - Critically Endangered
Favourite food: fruit, lizards, eggs, and chocolate seeds.

www.brookes.ac.uk



Charlie Sumatran Elephant

Smaller than, their African cousins, **Sumatran Elephants** are almost completely bald.

They live in dense forest and will munch on 150kg of plants each day – that's the average weight of two male humans!

Fun Facts

Cuteness: 4
Cleverness: 5
Noisiness: 2
Agility: 2
Distance from London, UK on foot: 8,040 miles

Essential Facts

Country: Sumatra
Weight: 2000-4000kg
Threat status: 3 – Critically Endangered
Favourite food: grass, leaves, shoots, barks, fruits, nuts, and seeds.

www.brookes.ac.uk



Shakira Sambar Deer

Beautiful **Sambar Deer** are nocturnal and live alone or in very small groups which is unusual.

They are the favourite prey of tigers and Asiatic lions, also sometimes crocodiles.

Fun Facts

Cuteness: 2
Cleverness: 3
Noisiness: 3
Agility: 3
Distance from London, UK on foot: 5,414 miles

Essential Facts

Countries: India, China, Borneo, Malaysia
Weight: 180-350kg
Threat status: 5 – Vulnerable
Favourite food: grass, fruits, leaves, herbs, buds, berries, bamboo, bark.

www.brookes.ac.uk



Will Brown wood-owl

This species, which lives across south Asia, is very shy and 100% nocturnal hunting small mammals at night. It can be

located from the noise of small birds 'mobbing' it during the day when it sleeps in tall trees.

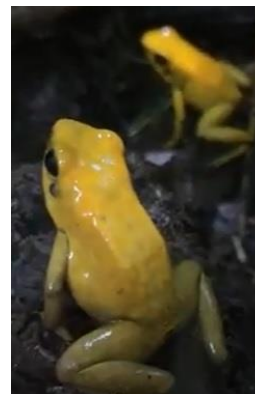
Fun Facts

Cuteness: 3
Cleverness: 4
Noisiness: 3
Agility: 3
Distance from London, UK on foot: 6,476 miles

Essential Facts

Country: Borneo, south Asia
Weight (M): 0.8-1.1kg
Threat status: 7 – Least Concern
Favourite food: small mammals, birds and reptiles.

www.brookes.ac.uk



Jeff Black-legged Dart Frog

This tiny frog lives in leaf litter, giving high-pitched, bird-like calls. It is one of the world's most toxic animals and

has enough toxins on its skin to kill 10 adults.

Fun Facts

Cuteness: 2
Cleverness: 3
Noisiness: 4
Agility: 3
Distance from London, UK on foot: 5,388 miles

Essential Facts

Country: Colombia
Weight: 0.2kg
Threat status: 4 – Endangered
Favourite food: Insects.

www.brookes.ac.uk

